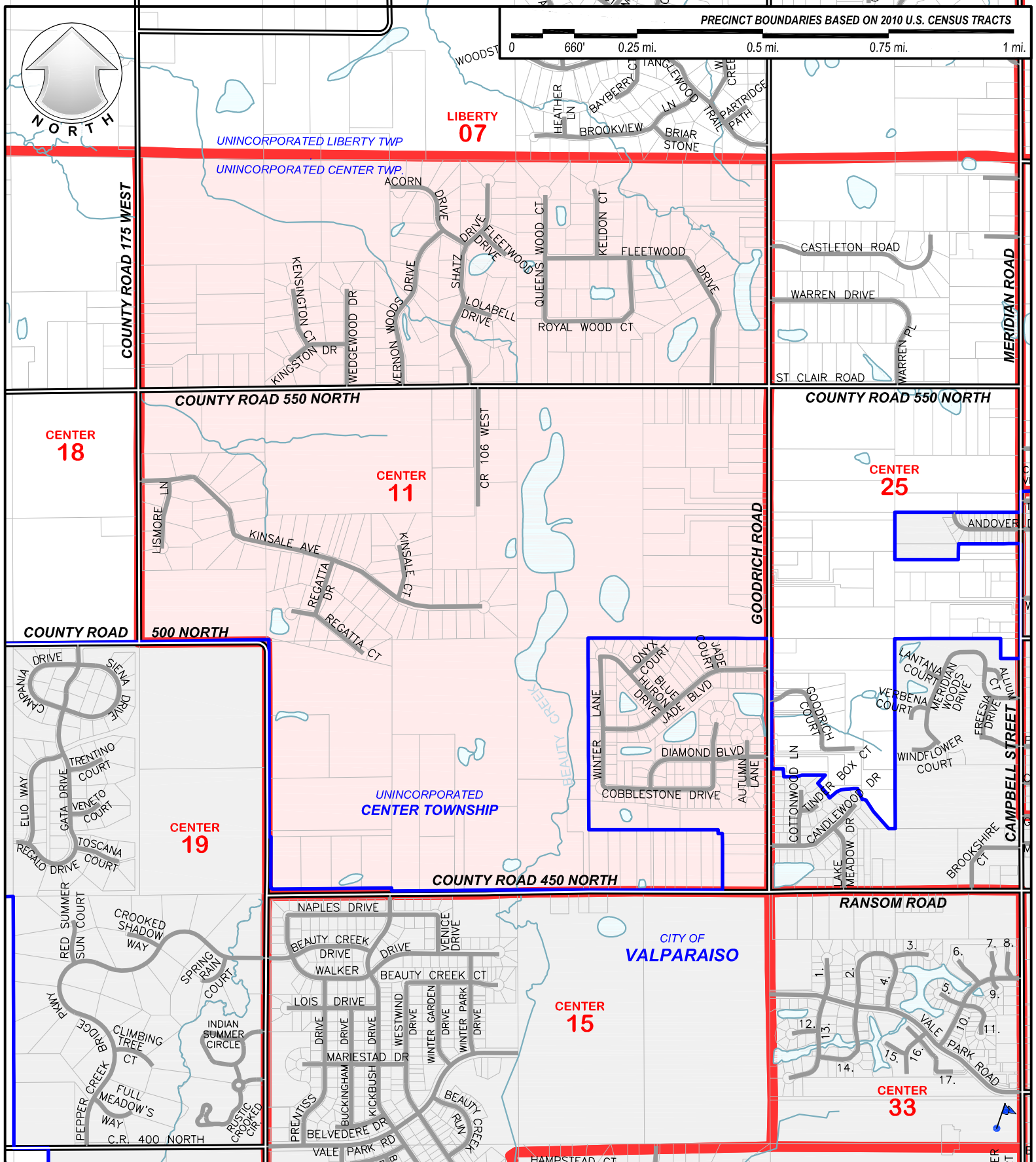
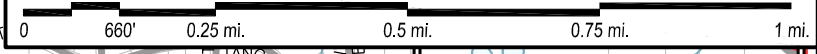




PRECINCT BOUNDARIES BASED ON 2010 U.S. CENSUS TRACTS



PORTER COUNTY SURVEYOR'S OFFICE
 KEVIN D. BREITZKE, P.E., L.S. - COUNTY SURVEYOR

155 INDIANA AVENUE SUITE 303
 VALPARAISO, INDIANA 46383
 PHONE (219) 465-3560 FAX (219) 465-3811

CENTER TOWNSHIP PRECINCT NO. 11

Poll location: Valparaiso High School - Door No. 10
 2727 Campbell Street

Date: 01-01-2012
 Scale: 1:1320'
 Quarter Section No. N/A

Precinct lines (red) are based on 2010 US Census Data provided by the Indiana Election Division and county election officials.